

Kiwa's development



Kiwa has officially been around since 1948. Our Testing, Inspection and Certification (TIC) services have grown to cover numerous markets and help thousands of customers around the world progress. But how did that come to be? Here are some highlights.

1929

Gasstichting (predecessor of Gastec) established.



1948

Kiwa is officially founded in the Netherlands as a public limited company. We formally inspect the first pipes for drinking water transportation.

1972

We open a water research laboratory (part of the company until 2006).



1977

Kiwa starts certifying the Dutch healthcare sector, for example the quality level of care.



1994

We add VCA (safety certification for construction companies) to our portfolio.



2005

Inspecta Finland en Sweden merge.

2007

Our activities in gas reach as far as Turkey. Plus, we open an office in South Korea to serve manufacturers producing there.



2010

A lot of activities are added to our portfolio as we incorporate several companies. To name just a few markets: roofs and façades, fire safety and security, and sports venues. We also start issuing licenses, a task taken over from the Dutch Transport and Public Works Inspectorate.



2013

Automobiles, planes and the surfaces they move on – we're capable of testing, inspecting and certifying (parts of) them.

2015

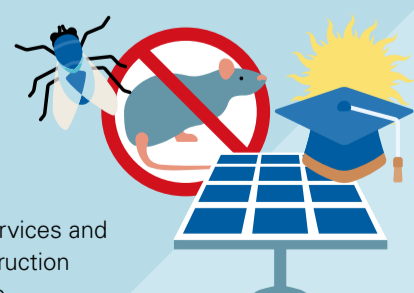
Inspecta, the largest TIC company in Scandinavia, the Baltics and Poland, joins the Kiwa Group. As the name suggests, Inspecta specializes in the inspection of e.g. industrial installations, mining equipment, oil, gas and chemicals and marine equipment.

2017

All united under one global Kiwa corporate identity, ready for a bright future!

2019

We add pest control services and expand our solar, construction and education expertise.



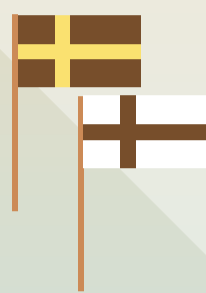
2021

We enter the solar PV market in the USA and expand our expertise in cyber security services.



1962

We introduce the KOMO quality mark for building materials.



1975

Finnish and Swedish authorities found what will become Inspecta bodies.



1983

The first robotic employee starts working at Kiwa. It is capable of, among other things, life tests for taps.



We open branch offices and sign partnerships in...

Belgium and Germany **1998**

Italy **1999**

the UK **2001**

China **2003**

...to offer our TIC services there.

2005

We step into gas technology and numerous other markets. Kiwa incorporates Gastec in the Netherlands, the UK and Italy. Kiwa Germany steps into automotive, machine building, medical products and food. A branch office in Sweden opens to conquer Scandinavia.



2008

We certify the production of oranges, olives and other food products now that we have colleagues in Spain.



2012

It's quite likely that as of now, parts of your smartphone or other high tech equipment have been tested by a Kiwa employee – perhaps even in the Far East.



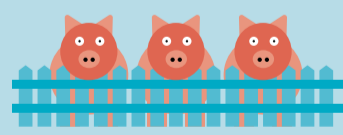
2014

Our Food, Feed and Farm services continue to grow, reach into Latin America, and now include organic production as well.



2016

You can find Kiwa colleagues now at farms and slaughterhouses in the Netherlands as we inspect and certify there, too.



2018

We further expand into Portugal (Food, Feed and Farm) and in the UK and Germany.



2020

System certification in the Asia-Pacific region grows, mainly in Australia and China. Plus, we now inspect stairs and storage racks. And our first Virtual Training Center opens in Finland.

